



• A MEMORIES CIDER MANUFACTURE

• THE OLDEST JAPAN RAMUNE MANUFACTURE

1. WHO WE ARE

2. OUR BRAND & PRODUCTS

Contact E-mail: info@tomomasu.co.jp

業績

1902年ラムネ製造販売業として創業後、社員の地道な努力とお客様に支えられ、2019年度に売上高100億円を突破し、その後も順調に伸び続けています。



拠点

約10年で7拠点、グループ会社3社となり、グループ連結売上130億円、社員数約170名まで成長しました。



Tomomatsu Drink Co.,Ltd was founded in 1902.

A long-established manufacturer with a 120-year history that mainly produces carbonated drinks. We provides a large market for strong series and also focus the memories local cider in Japan and export to about 20 countries through the powerful and effective distribution channel.

Our sales grew 55 times over 20 years.

We have grown to 8 locations and 3 group companies, with consolidated group sales of 13 billion yen and approximately 170 employees.

CORPORATE VISION



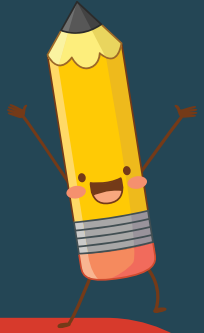
Management Philosophy

We strive to ensure the happiness and realization of dreams of all people and employees involved in our business activities.

At the same time, we aim to create new value through our business and contribute to society.



3. APPEALING VALUES



TECHNICAL ABILITY

- Multi-function extractor
- High carbonated acid



CREATIVITY

Commitment to
Planning and Design
(not BtoB or BtoC, it's
Human to Human)



ENVIRONMENTAL POWER

Commitment to Materials
(Nature sugar • water • glass bottle)



• Swan Cider



**MEMORIES
BRAND &
PRODUCT
LINEUP**

• Kids Beer




• Hakurei Sparkling



• Kids Farm Fruits Series



• Original Ramune



OUR PRODUCT LINE UP



OEM PRODUCT LINE UP

- Turn your ideas into reality
- 100 annual developing achievements

※Please make sure to request manufacturing in accordance with the laws and regulations of other countries.

